



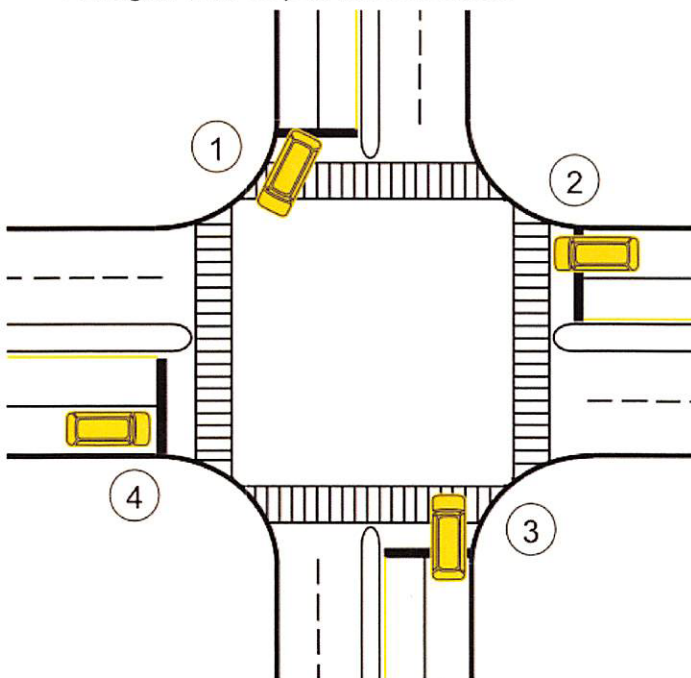




**ALERT TODAY ALIVE TOMORROW – Florida Department of Transportation
Public Opinion Survey/ Program Evaluation**

1. Do you have access to a vehicle you use regularly?
 - a. Yes
 - b. No
2. Bicycles are considered vehicles and it is legal to ride a bicycle on the roadway?
 - a. True
 - b. False
3. What is the minimum separation required for a driver passing a bicyclist?
 - a. No minimum required
 - b. 1 foot
 - c. 3 feet
 - d. 5 feet
4. When riding a bicycle on the roadway, you should:
 - a. Ride with Traffic
 - b. Ride against Traffic
5. When you are walking along a road without sidewalks, you should:
 - a. Walk with Traffic
 - b. Walk against Traffic
6. Vehicles making a permitted right turn on a red signal shall stop at which location:
 1. 
 2. 
 3. 
 4. 
7. In your opinion, how safe are the roads in Florida for pedestrians and bicyclists?
 - a. Very safe
 - b. Somewhat safe
 - c. Neither safe nor unsafe
 - d. Somewhat unsafe
 - e. Very unsafe
8. What is the top reason you think Florida may be unsafe for pedestrians and bicyclists?
 - a. Road or sidewalk conditions
 - b. Signals not working or not properly timed
 - c. Aggressive driving
 - d. People not following laws and signals
 - e. Not enough enforcement of laws, signals and rules
 - f. Inadequate bus stop facilities or placement
9. You would walk or ride a bicycle more for either daily needs or recreation if safety issues in your community were addressed:
 - a. Strongly Agree
 - b. Agree
 - c. Neutral
 - d. Disagree
 - e. Strongly Disagree
10. Approximately how many miles do you walk or bike during the week?
 - a. Walk: _____ miles
 - b. Bike: _____ miles
 - c. I do not walk or bike



Zip Code: _____

Gender: M / F

Age: <18 / 19-29 / 30-49 / 50-64 / 65+

Ethnicity: Hispanic / Non-Hispanic

Race: African American
Asian
Caucasian
American Indian
Other/Pacific Islander